

LBNL Participation in IceCube and AMANDA

Principal Activities:

DAQ

System Software

String 18

Data Handling

Supporting roles:

Calibration and Monitoring

Education and Outreach

LBNL Participation in IceCube and AMANDA

DAQ Level 3 Lead - Nygren (WBS 3.3)

Hardware

DOM Main Board

DOM HUB (with DESY)

Software

Architecture & Design

Collaborating Institutions (at present)

DESY (Front End Electronics)

Penn S. (String Processor)

Stockholm (Feature Extraction)

U. Wisconsin (Interfaces, String Processor)

Bartol (IceTop)

LBNL Participation in IceCube and AMANDA

Software Systems Level 2 Lead - Carithers (WBS 4)

System Architecture & Design

Data Handling Software

Collaborating Institutions:

Software Working Group

LBNL Participation in IceCube and AMANDA

AMANDA

String 18

Firmware and Software

Waveform Analysis

Calibration (Time and LED flashers)

Integration of DOM into the analysis

Data Processing

1996-1999 data (7 TB archived)

Data transfer from Pole until 3/2002

LBNL Participation in IceCube and AMANDA

Personnel

Dave Nygren
Lead for DAQ,
String 18



Bill Carithers
Lead for
Software
Systems



Bob Stokstad
PI, Management
String 18



Willi Chinowsky
Management,
Education
& Outreach

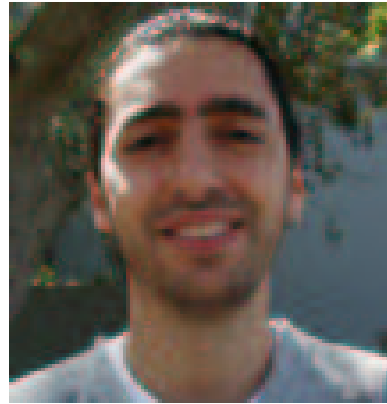


 = present at the collaboration meeting

LBNL Participation in IceCube and AMANDA

Personnel, cont.

**Azriel
Goldschmidt**
String 18



**Jodi
Lamoureux**
Data Handling



**Chuck
McParland**
DAQ Software
String 18



Simon Patton
System Architecture
Data Handling



LBNL Participation in IceCube and AMANDA

Personnel, cont.

**Jerry
Przybylski**
Engineering



Bob Minor
Engineering



Peter Denes
Engineering



**Howard
Matis**
DAQ



LBNL Participation in IceCube and AMANDA

Personnel Changes

**Thorsten
Stezelberger**
Engineering
To start in July



**Klaus
Helbing**
String 18
DAQ
Lynen Fellow,
To start in Oct.



John Jacobsen
String 18 Software
To Madison, to paint



Karl-Heinz Sulanke
to visit LBNL
beginning in October